

# VANUATU Sustainable Energy Investment Forum

Melanesian Hotel, Port Vila

2<sup>nd</sup> September, 2021

# Overview

1. Introduction
2. Governance Structure
3. Strategic Markets
4. Funding sources
5. Financial products
6. NGEF Progress so far
7. Challenges

# Introduction

- ❑ The National Energy Road Map (NERM) was revised by 2016;
- ❑ The Government's focus for creating NGEF was to assist in accelerating NERM implementation
- ❑ Targets are:



100% Renewable Energy (RE) generation by 2030;



100% electrification by 2030;

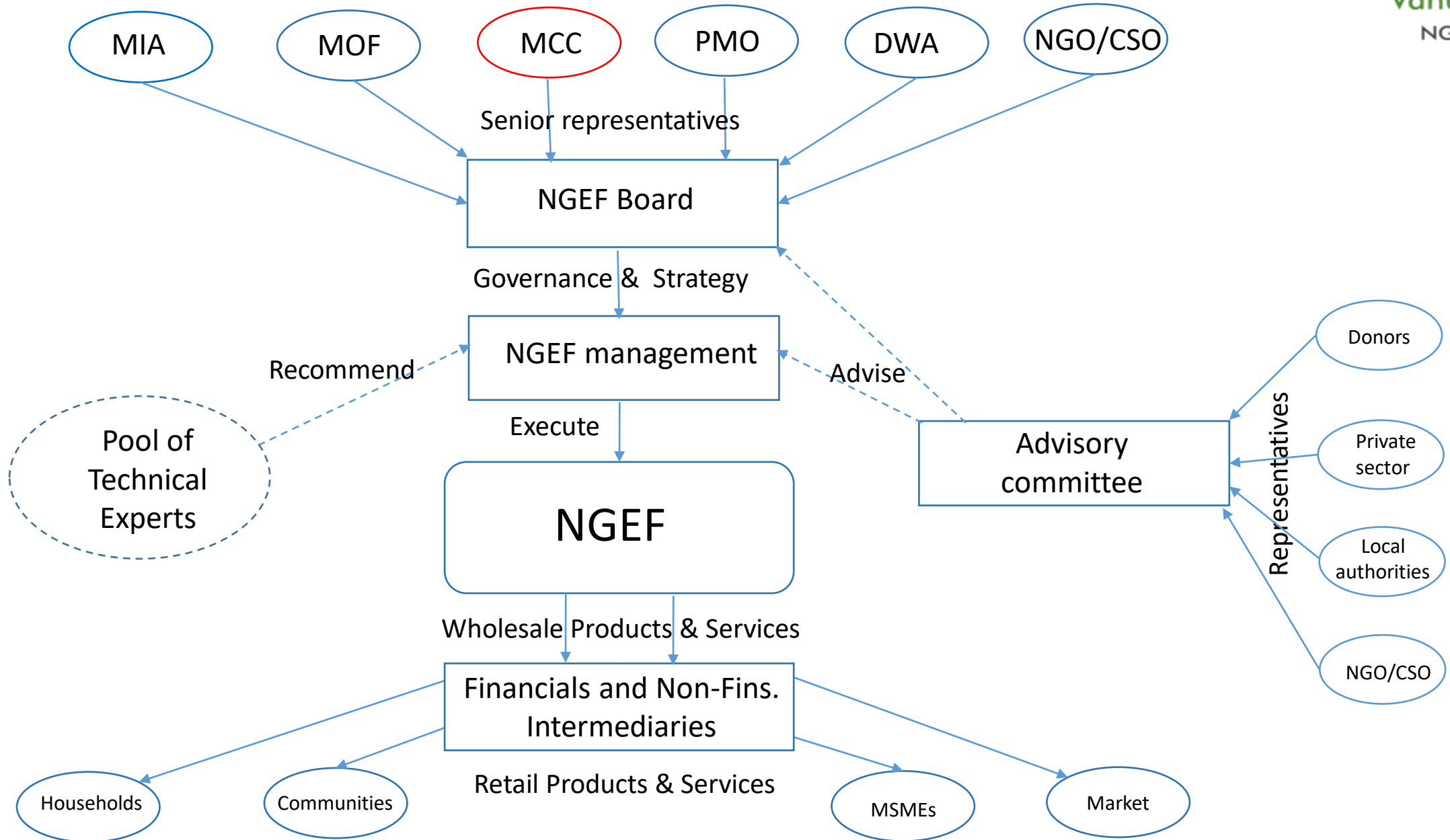


14% savings from electricity end-use efficiency improvement;



65% of tourism bungalows using RE sources for electricity requirement;

# Governance Structure



# Strategic Markets

Supporting:

- **Off-grid Renewables / rural electrification**
- **Energy Efficiency**
- Green Growth

Targeting beneficiaries:

- Households
- **Public facilities**
- **Micro-, Small-, and Medium Size Enterprises e.g.**  
**Cooperatives & tourism operators**
- RE/EE equipment suppliers

# Funding Sources

- **Domestic - Government of Vanuatu**
- International - Donor and Development Partners
- Internal - through interests on soft loans

# Types of Financial Products

NGEF financial intermediation will focus on:

- **Lending products for long-term liquidity**
- **Guarantee** products for risk mitigation
- **Grants** for vulnerable groups of population
- or some combination of these.

# Progress so far

#	NAME OF APPLICANT	INSTITUTION	LOCATION	VREP II Subsidy	17% Deposit	LOAN AMOUNT	FUNDING	WHS/DAY
1	Futuna Fishemens Coop	Cooperative	Mission Bay, Fut	573,333	97,000	752,070	Pilot Fund	2249
2	Susiana Coop	Cooperative	Nikaura, E. Epi	423,529	72,000	400,657	Pilot Fund	1824
3	Tchimae	Cooperative	W. Ambrym	882,353	150,000	979,538	NPP Fund	4200
4	Mene	Cooperative	W. Ambrym	882,353	150,000	999,288	NPP Fund	4200
5	Sakpisi	Cooperative	SE. Ambrym	335,294	57,000	526,770	NPP Fund	1999
6	Laharis	Cooperative	Paama	335,294	57,000	473,867	NPP Fund	1176
7	Malvahal	Cooperative	S. Malekula	247,059	42,000	551,470	NPP Fund	2347
8	Lambubu	Cooperative	Central Malekula	441,176	75,000	710,194	NPP Fund	2347
9	Sarmette	Cooperative	Central Malekula	1,247,059	212,000	1,345,289	NPP Fund	7310
10	Tontar	Cooperative	N. Malekula	882,353	150,000	994,822	NPP Fund	4200
11	Three Hands	Cooperative	N. Pentecost	882,353	150,000	1,058,933	NPP Fund	4200
12	Marus Coop	Cooperative	Burbar, SE Malek	882,353	150,000	968,077	NPP Fund	4200
13	Navara Savings & Loan Soc	Cooperative	Efate	882,352	-	2,117,889	Pilot Fund	6400
14	Vuthev	Cooperative	East Santo	1,702,000	289,340	2,132,955	NPP Fund	10735
15	Unity	Cooperative	South Epi	573,335	97,467	689,161	NPP Fund	2353
16	Ikiti	Primary School	SW Tanna	741,176	126,000	619,201	Pilot Fund	2249
17	Neramb	Primary School	Unua, SE Maleku	741,176	126,000	612,001	Pilot Fund	2249
18	Lamenaura	Primary School	Central Tanna	358,824	61,000	376,700	Pilot Fund	1177
19	Enkataley	Primary School	E Tanna	441,176	75,000	409,000	NPP Fund	2347
20	Hoghabour	Secondary School	E. Santo	3,400,000	578,000	4,191,009	NPP Fund	21470
21	Iatap	Primary School	SW Tanna	442,059	75,150	548,850	NPP Fund	2347
22	Uripiv	Primary School	Uripiv Island	576,471	98,000	517,879	NPP Fund	2353
23	Robin	Primary School	Loh Island	882,353	150,000	820,180	NPP Fund	4200
24	Fetukai	Primary School	Tanna	589,118	100,150	268,850	Pilot Fund	1200
25	Lini Memorial College	Secondary School	North Pentecost	2,170,588	369,000	1,799,400	Pilot Fund	7819
26	Lounahunu	Primary School	Tanna	882,353	150,000	966,115	NPP Fund	4200
27	Lamenu	Primary School	Lamen Bay, Epi	482,353	82,000	503,200	NPP Fund	2353
28	Imaru	Primary School	Tanna	1,168,000	198,560	1,757,777	NPP Fund	6440
29	Yvenkula	Primary School	Tanna	588,235	100,000	669,623	NPP Fund	1140
30	Lamlu	Primary School	Tanna	3,404,000	578,680	4,702,035	NPP Fund	21470
31	Lamnatou	Primary School	Tanna	881,894	149,922	1,336,344	NPP Fund	4200
32	Tuhu Latan	Junior Secondary Sch	Tanna	1,168,000	198,560	1,278,031	NPP Fund	6440
33	Ranwadi	College	Pentecost	1,702,000	289,340	1,749,278	NPP Fund	10735
34	Epi High School	High School	Epi	1,702,000	289,340	3,133,515	NPP Fund	10735
35	Iquaramanu	Primary School	South East Tann	1,168,000	198,560	1,378,835	NPP Fund	6440
36	Manuapen	Primary School	South East Tann	573,335	97,467	538,195	NPP Fund	2353
				35,235,309	5,839,536	42,876,998		183,657



# Challenges

- Funding Availability;
- COVID-19 is impacting the Implementation Process – stock
- Maintenance issues of solar system;
- Capacity to install by energy vendors;
- Identification of financial intermediaries to deliver NGEF's financial products – increase MOUs with government agencies

# TANK IO TUMAS

