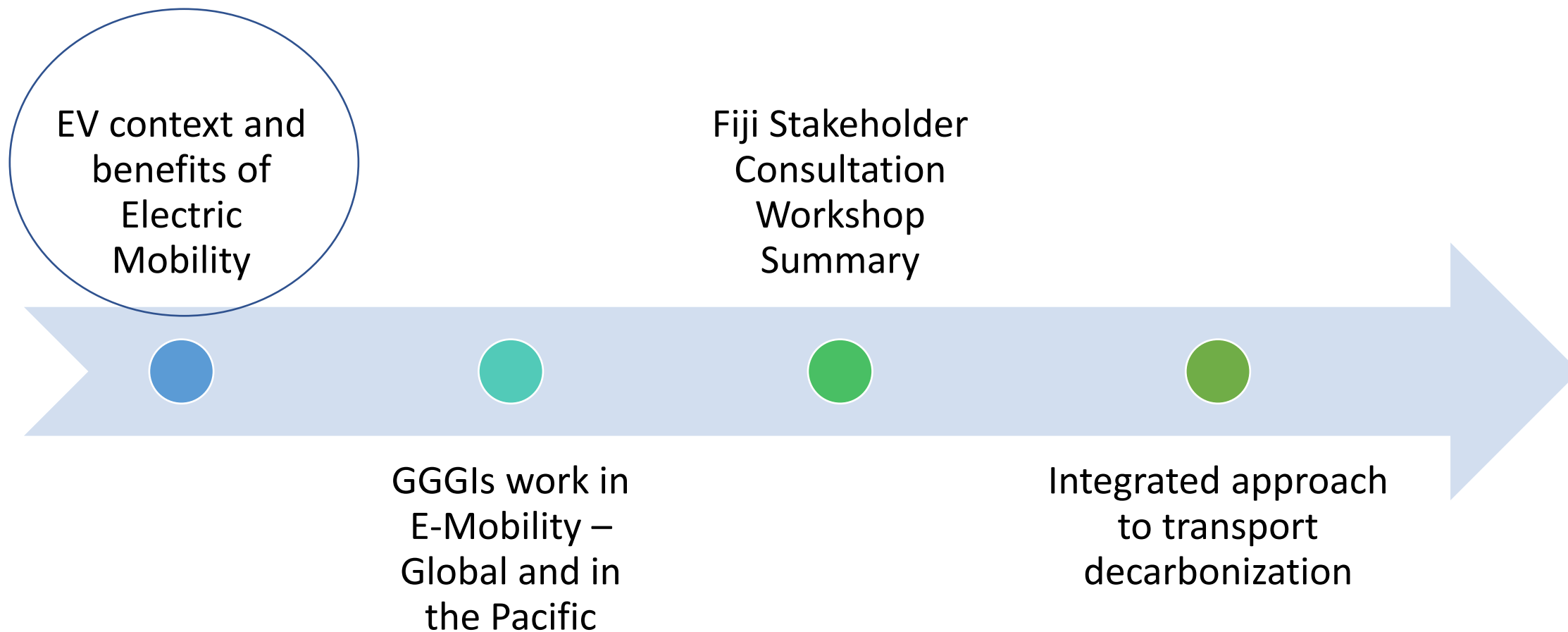


GGGI Sustainable Mobility Work Globally and in the Pacific Region

Facilitating the Adoption of E-mobility & Smart Transport Systems for the Sustainable Development

Julia Hollnagel, PhD
Senior Officer – Pacific Transport & Sustainable Transport
Global Green Growth Institute (GGGI)

Contents



Why go electric?

Longer-term **decrease in dependence on fuel imports** and associated volatile costs.

- Transport sector in PICs is the primary consumer of fossil fuels.
- Heavy reliance on **high-cost fuel imports** (2019, the fuel import bill for Fiji was 9.5 per cent of its GDP).
- Fossil fuel imports increase **vulnerability to price and exchange rate fluctuations**, particularly with the current price increases

Social & Economic benefits

- Opportunity to obtain new **technical skills** for EVs to meet future demand.: Potential to **create new jobs**.
- Public Health Benefits – **Healthier population/reduced healthcare cost**:
 - Less noise & vibrations: Comfortable customer experience.
 - Improved air quality (eliminate local emissions).

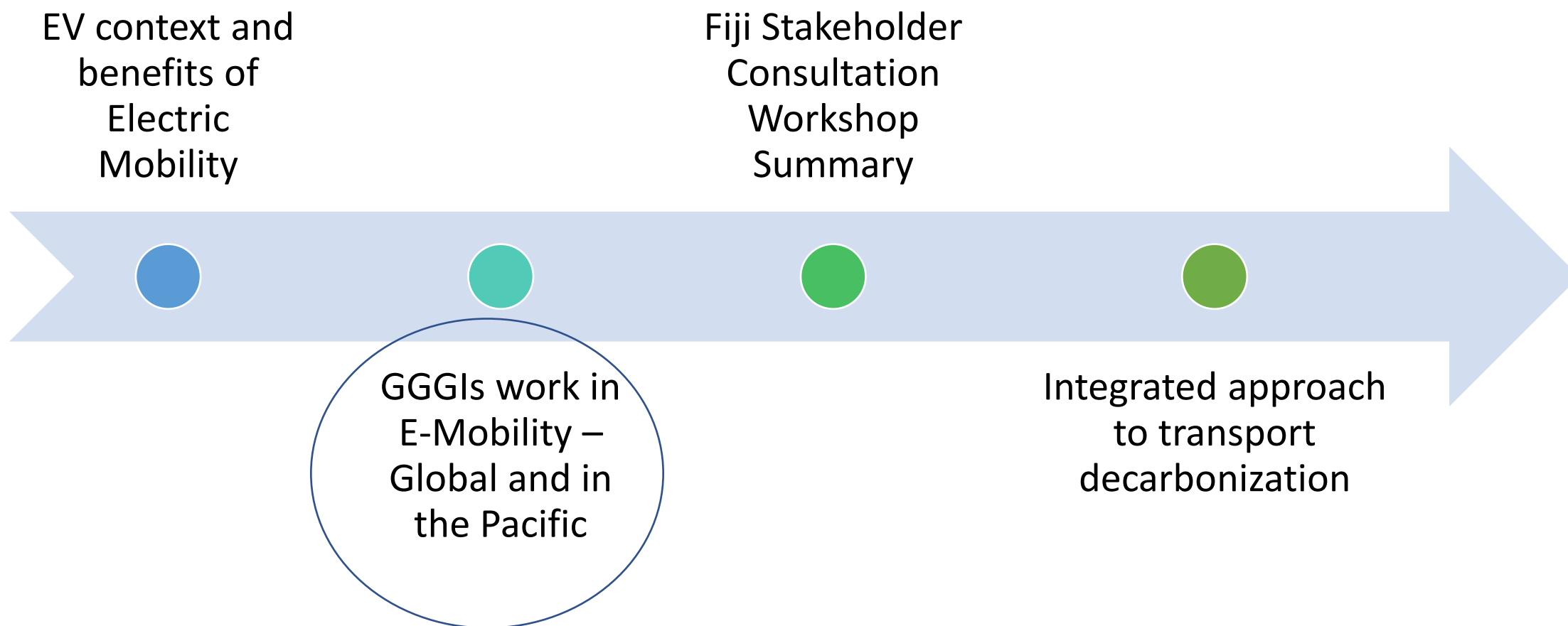
Reduces **GHG emissions** and demonstrates Climate leadership on the global stage.

- **Reduce emissions** in combination with RE targets.
- **Avoid lock-in** to vehicles with high emissions for 15-20 years.

Opportunities for the future of mobility

- Basis for **new mobility services** and **improve cost-effectiveness of new mobility solutions via synergies and service integration**.
- Give priority to sustainable modes.
- Multimodality and Resilience: **Vehicle to Grid integration – Increased Disaster resilience**. Rapid deployment after events.

Contents



GGGI Transport Sector Priorities



1 **Mainstreaming sustainable transport strategies** into national, sub-national, regional, local, and sectoral policies and development plans;



2 **Developing sustainable transport projects/programs** by applying e-mobility solutions to transport infra & system investments; and

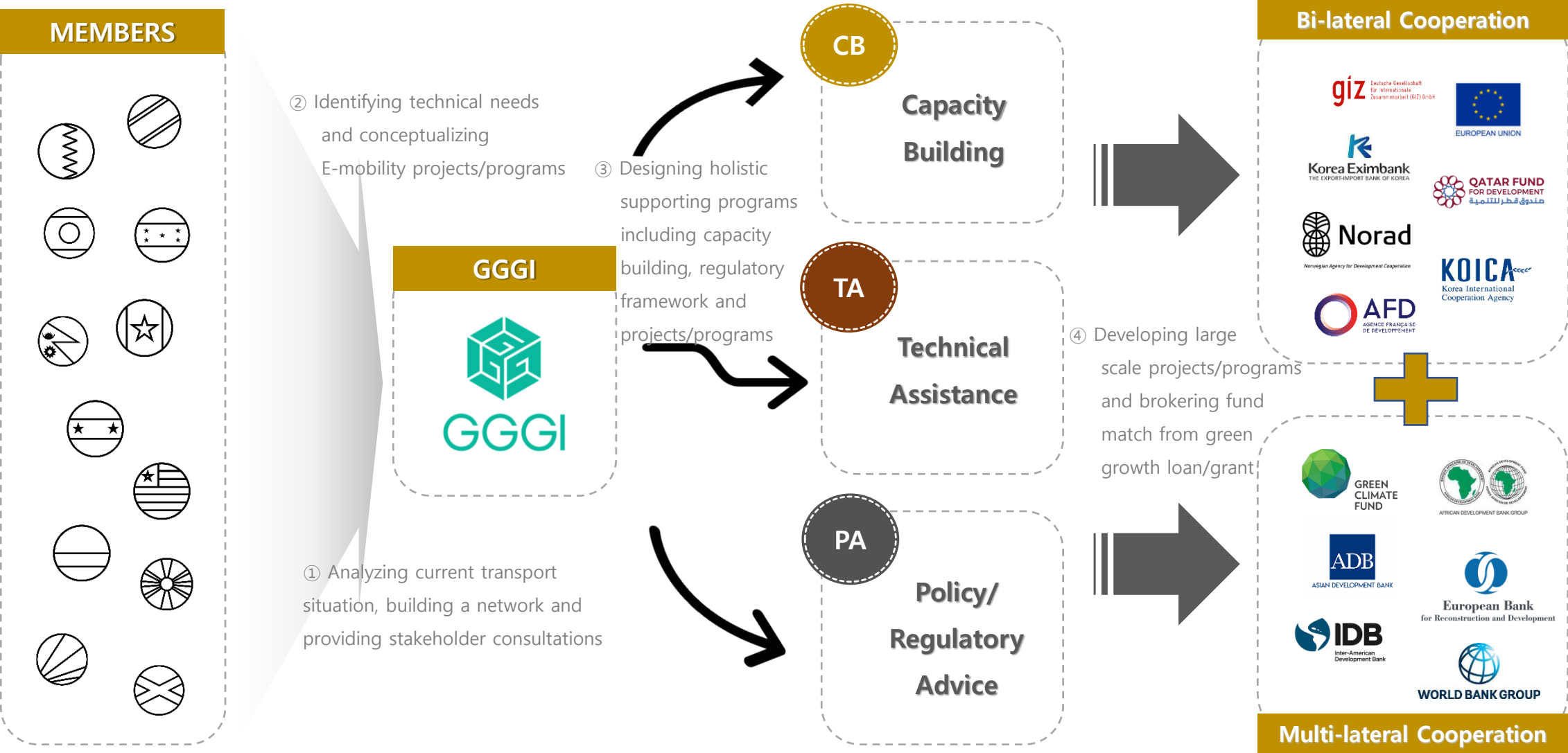


3 **Strengthening and supporting relevant stakeholder capacity** through a diverse set of global programs.

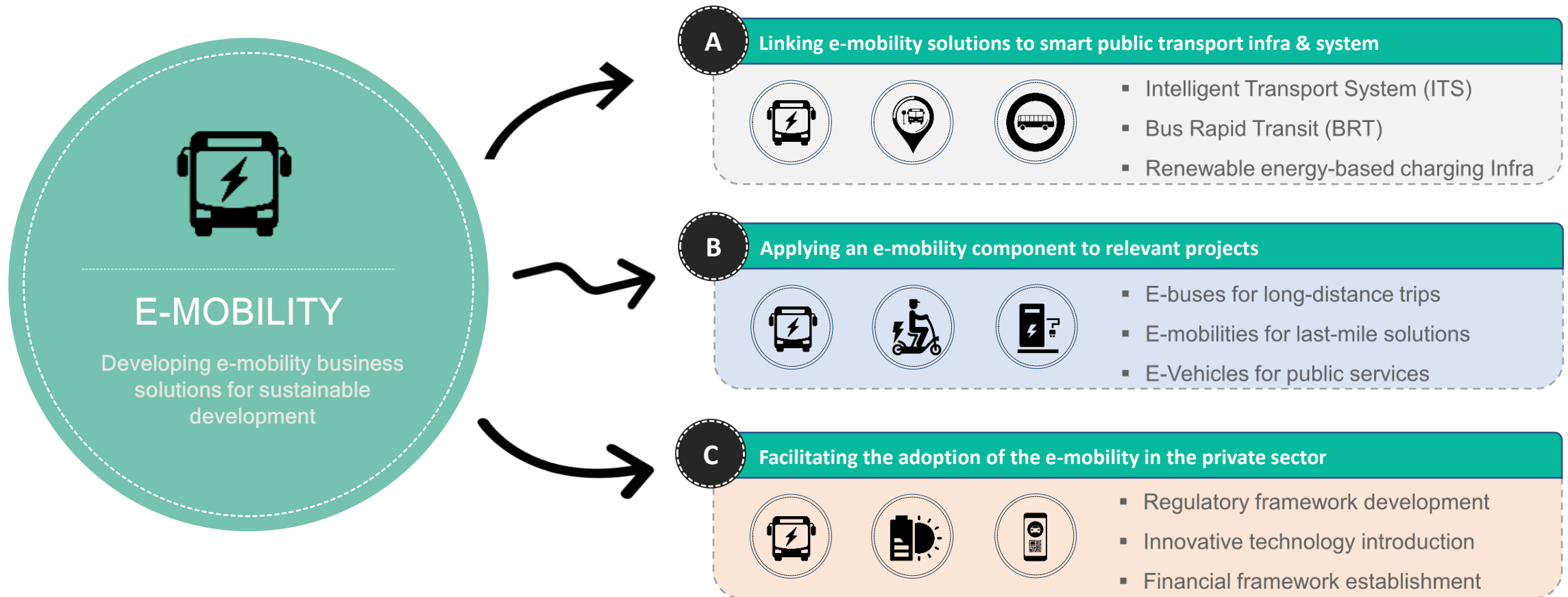
Activities in Member Countries



GGGI's role in Supporting Sustainable Transport

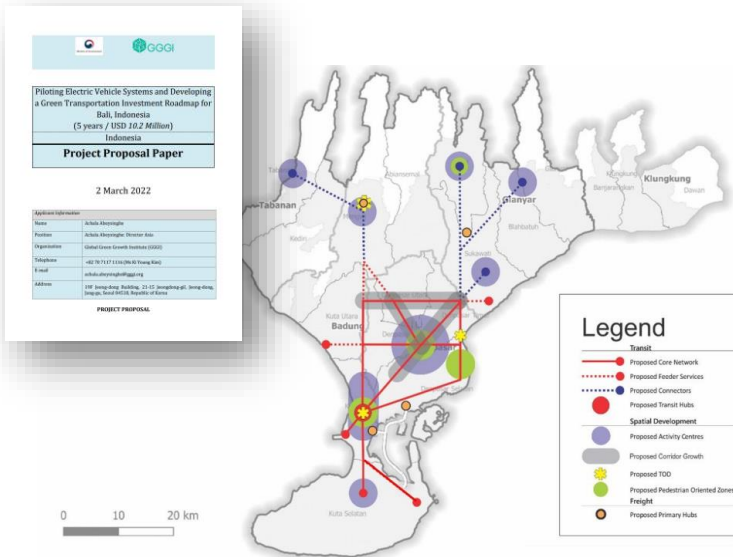


GGGI Transport Approach



A: Indonesia Case – Linking e-mobility solutions to public transport infrastructure

ACTIVITIES



Plan to conduct technical assessments and pilot project for e-buses and charging infrastructure:

- Roadmap for E-Mobility distribution
- Technical feasibility assessment for e-buses
- 10 E-buses & 10 charging infrastructures piloting

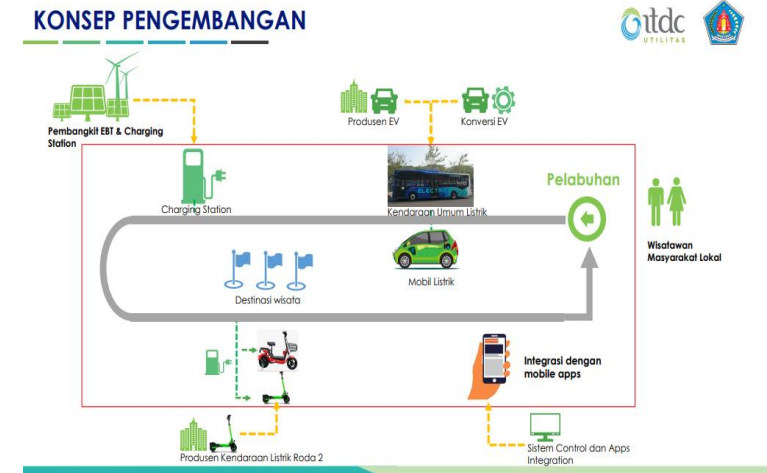
PARTNERSHIP



Building a partnership with relevant stakeholder for scaling up e-mobility :

- Government of Indonesia
- Korea Ministry of Environment
- Korea Development Bank, Hyundai Motor

COMPONENTS

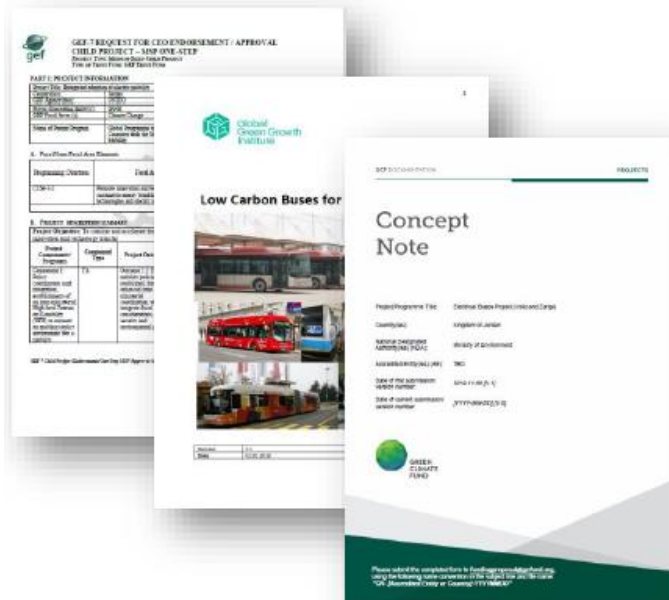


Trying to provide best solution to adopt sustainable public transport services:

- Electric Buses and charging infrastructure
- Smart Transport Management Systems
- Capacity building and consultations

B: Jordan Case – E-Mobility component for a Tourism Project

ACTIVITIES



Having conducted technical assessments and prepared investment proposals:

- GEF-7 for Integrated Adoption of E-Mobility
- Pre-F/S on low-carbon buses for Amman
- E(Eco & Electric)-Tourism Project for Petra

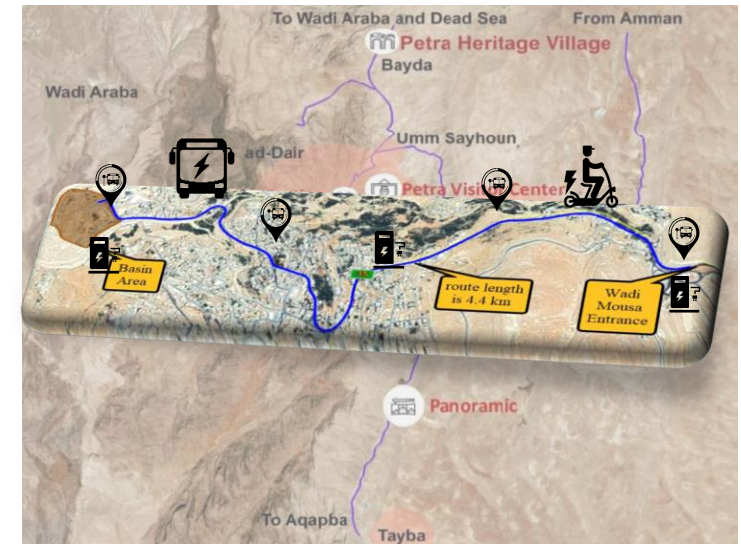
PARTNERSHIP



Building a partnership with relevant stakeholder for scaling up e-mobility project:

- Governments (MoE, MoT, PDTRA)
- Int' Organizations (UNIDO, GCF, IFC)
- Private sector and local NGOs

COMPONENTS

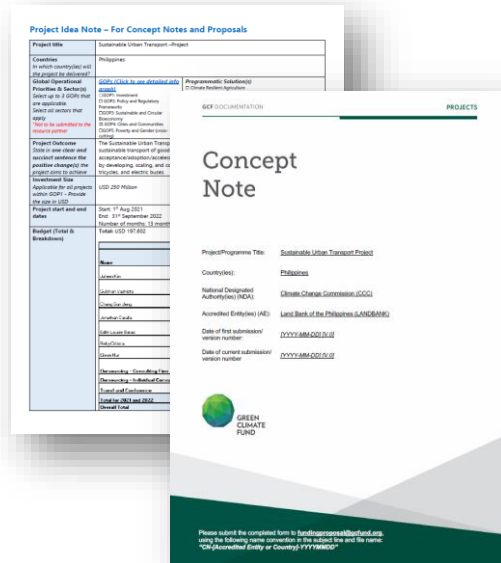


Designing E-Tourism Project with three interlinked components:

- E-Mobility (Buses and Scooters) for Tourists
- EV Supply Equipment (Charging stations)
- EV Management Center

C: Philippines– Facilitating the adoption of e-mobility in the private sector

ACTIVITIES



Plan to conduct technical assessments and prepared investment proposals:

- Pre-F/S on electric mobility including e-jeepneys, e-tricycles, and e-buses.
- GCF CN, PPF & FP development.

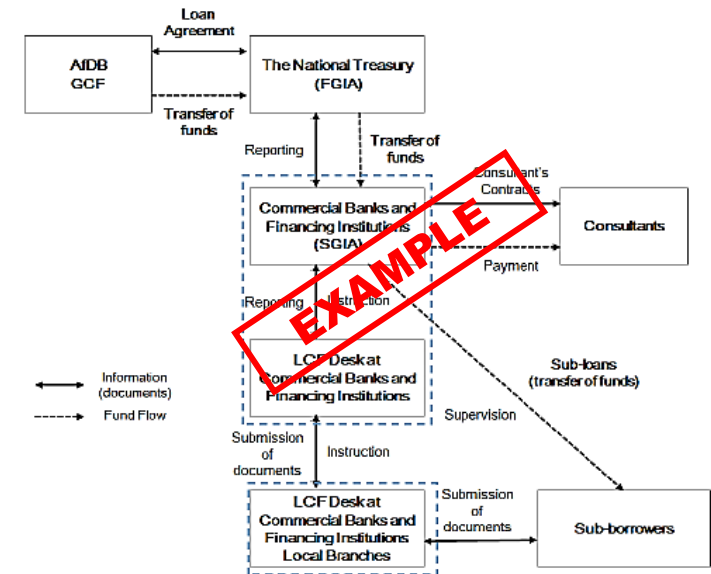
PARTNERSHIP



Building a partnership with relevant stakeholder for scaling up e-mobility project:

- Department of Transportation, Department of Interior and Local Government.
- Land Bank of the Philippines (LANDBANK)

COMPONENTS



Plan to develop Sustainable Urban Transport Project with three interlinked components:

- Financial mechanisms for e-vehicles
- E-buses on suggested BRT Routes
- Investment in non-motorized transit options

GGGI Transport Work Focus

STAGE	Activities	Deliverables
1 ST STAGE	<ul style="list-style-type: none"> Analyzing transport conditions and related policies to identify transport demands Providing consultations to related stakeholder to mainstream sustainable transport into development policies & plans Conceptualizing a transport project based on assessment activities and consultations 	<ul style="list-style-type: none"> Project idea notes Capacity building materials Stakeholder engagement
2 ND STAGE	<ul style="list-style-type: none"> Designing national, sub-national, regional, local, and sectoral regulatory framework Providing capacity building programs for relevant stakeholders including government officers and experts 	<ul style="list-style-type: none"> Regulatory framework Capacity building materials
3 RD STAGE	<ul style="list-style-type: none"> Conducting a feasibility study (pre) on e-mobility and related technologies Producing a project concept note for mobilizing financial resources Producing a funding proposal for international funds and bilateral funds 	<ul style="list-style-type: none"> F/S reports Project concept notes Investment proposals
4 TH STAGE	<ul style="list-style-type: none"> Implementing proposed projects/programs Conducting pilot projects 	<ul style="list-style-type: none"> Projects or Programs

GGGI's Sustainable Mobility Work in the Pacific

- Offices in 5 Countries: Kiribati, Tonga, Papua New Guinea, Vanuatu and Fiji
 - (+ CFAN advisors covering additionally Tuvalu, Samoa and the Solomon Islands)
- Providing technical assistance for
 - i. strengthening the regulatory framework and filling of gaps in technical, financial, and legal studies to enable e-mobility adoption,
 - ii. the preparation of bankable concept notes, and
 - iii. capacity building and knowledge sharing.
- Supporting identification and mobilization of resources
 - Integrated Sustainable Transport Project for Korean Green ODA (at concept level stage)
 - E-Mobility Global Program expansion to Pacific region under GEF8 jointly with UNEP





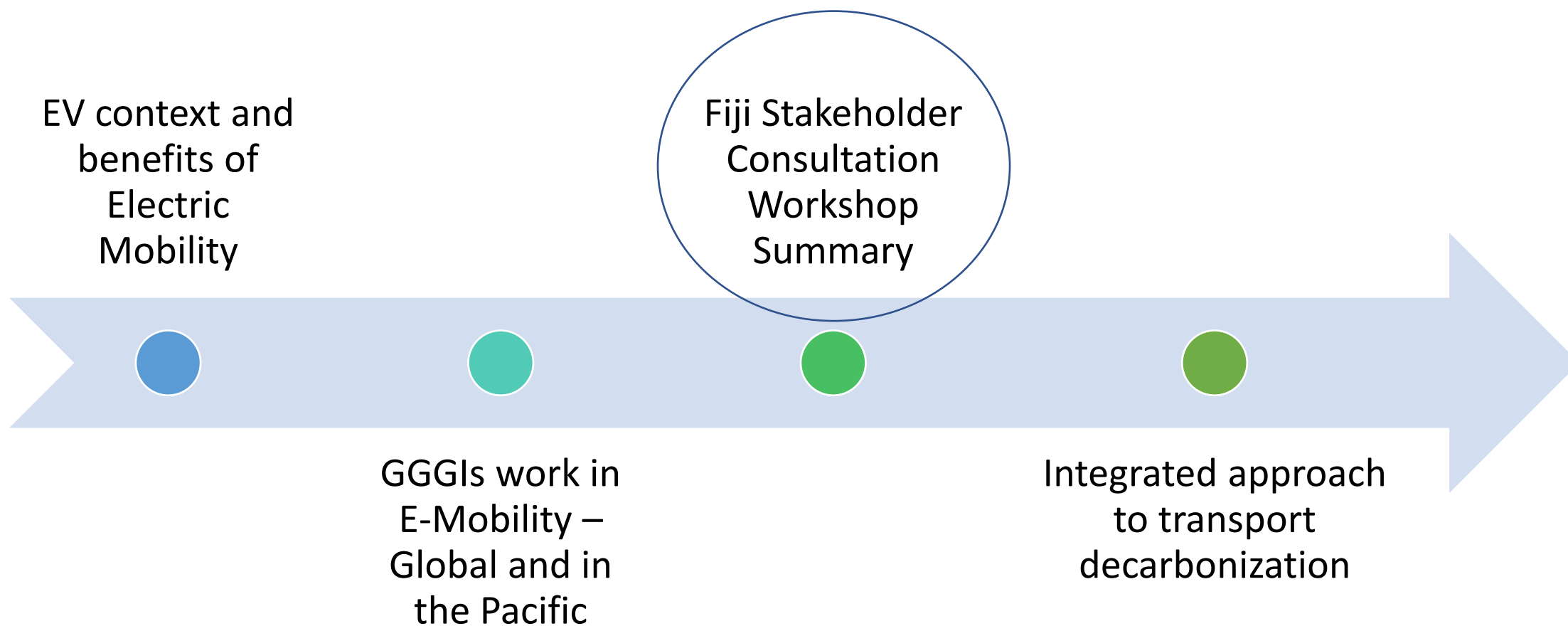
GGGI Transport Work Examples



Fiji:

- 2018: **Fiji Low Emission Development Strategy 2018-2050 (LEDS)** Contains chapter on Land Transport.
- 2019: Technical Report: **Energy and Transport Data Audit** and Data Management Assessment for **Electrification of the Transport Sector**.
- 2019: Technical Report: **Analysis of the Power Sector Infrastructure Requirements on Electric Vehicles** for Viti Levu.
- 2021/22: Technical Support to **Feasibility study on Electric Shuttle Bus Pilot Project** in the Suva Metropolitan Area
- 2021/22: Policy Brief for **Improvement of Vehicle Emission Standards**
- 2022 Support to public/private entities for **transition to EV Fleet**
- PNG: 2022 Support to **Technical Working Group** during EV Policy Draft Development
- Tonga: 2022 Preparation of **3 Project Idea Notes** for E-Mobility Pilots
- Vanuatu: 2022/23 Preparation of **Vehicle Emission Standards and Fuel Standards**
- Kiribati: Ongoing- Sustainable **Transport Policy Analysis**

Contents



Fiji Stakeholder Consultation Workshop Summary

- June 28, 2022, 9:00 AM – 12:30 PM
- 47 participants (33 male, 14 female) from national and local government, private sector, development partners, research institutions



Short-Term Goals

Planning and Standard Setting:
Public Awareness and Stakeholder
Engagement
Pilot Projects
Feasibility Studies



Medium-Term Goals

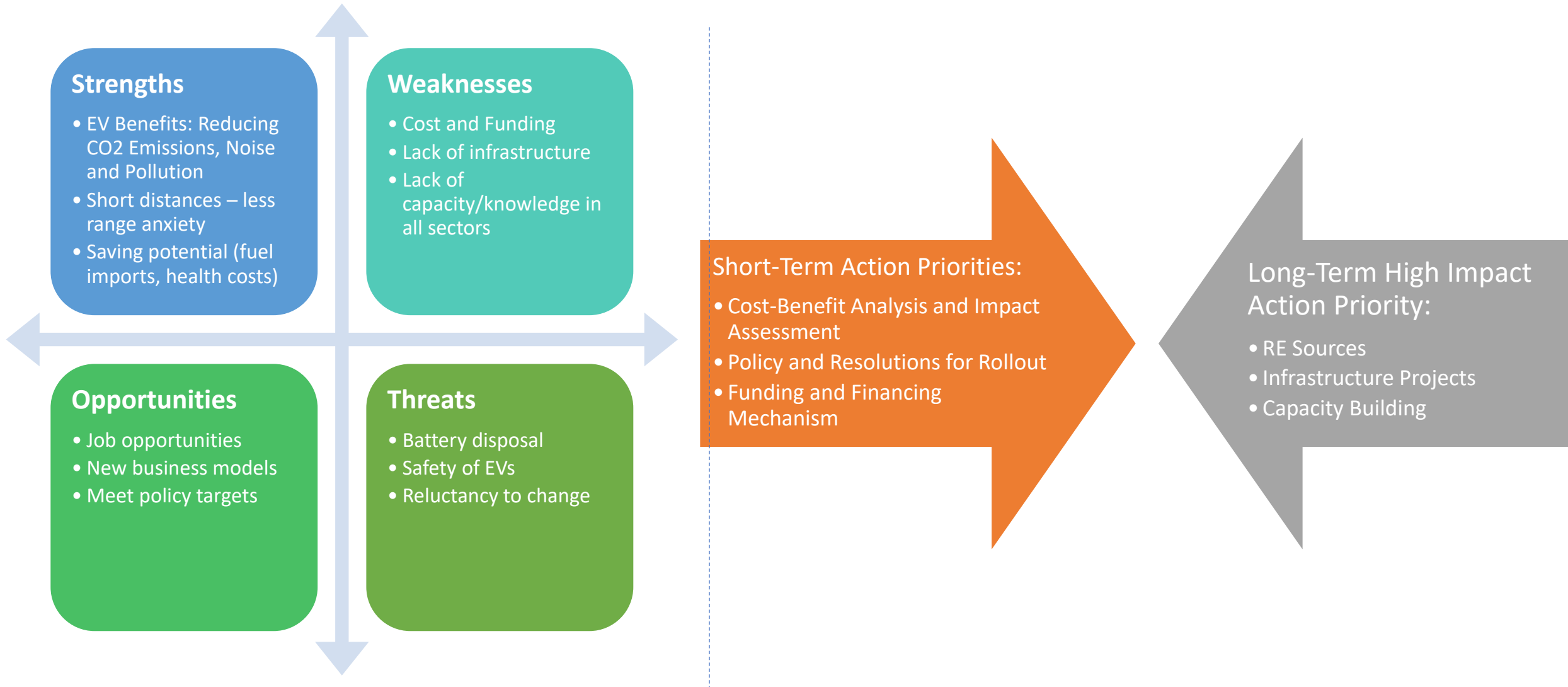
Charging Standards
Upgrade of Infrastructure
Policy Actions and Planning



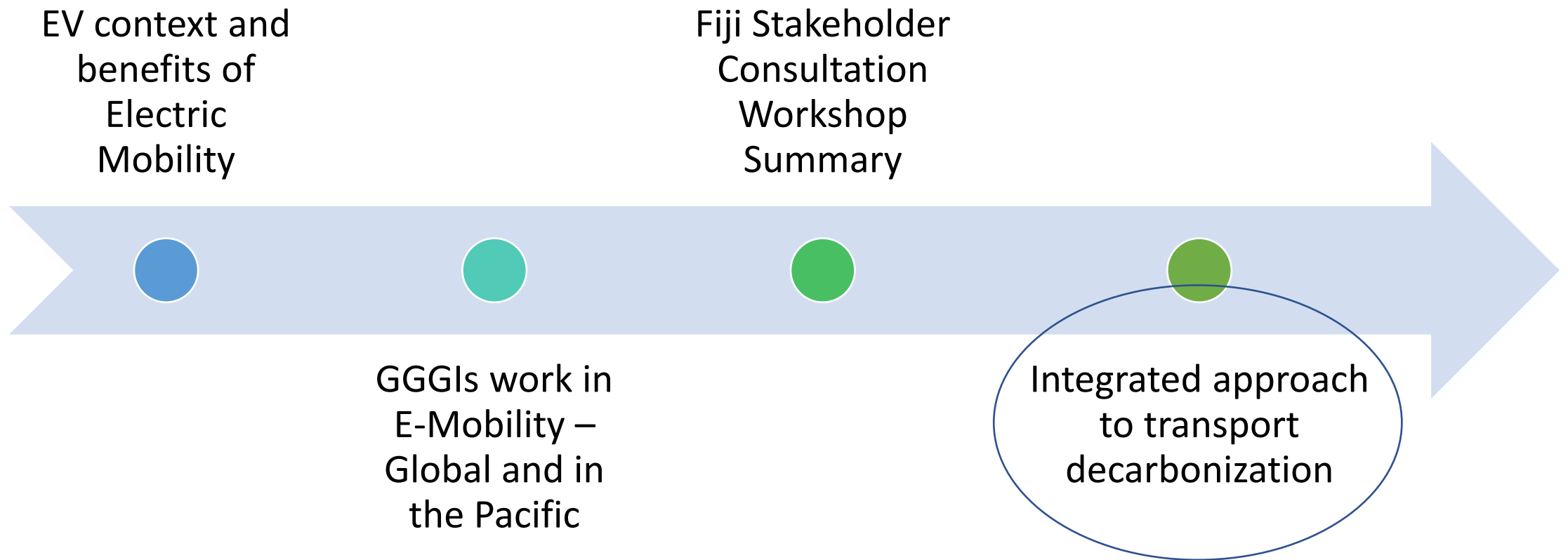
Long-Term Goals

Accessible and affordable electric
Mobility
Recycling of Vehicles/Batteries
Maintenance and Servicing

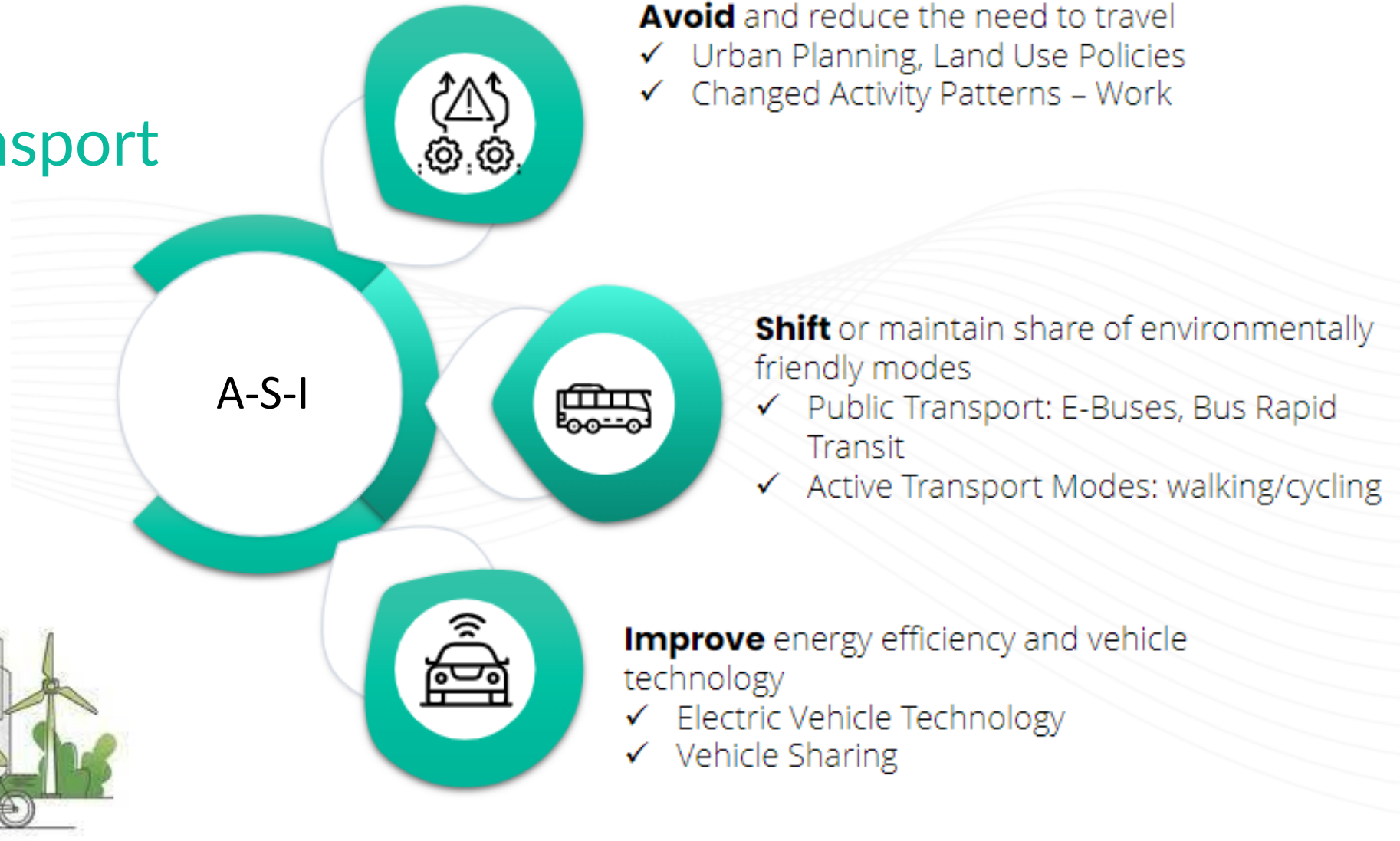
Stakeholder Consultation Workshop Summary



Contents



EV's & the A-S-I concept: An integrated approach to transport decarbonization



Thank You

Q & A

Julia Hollnagel, PhD
Senior Officer – Pacific Transport & Sustainable Transport
Global Green Growth Institute (GGGI)
E-Mail: julia.hollnagel@gggi.org

