

NGAAHI
KONGOKONGA
MAHU'INGA 'O E
TEKINOLOSIA
SOLA



Kakano

- Kalasi kehekehe 'o e Ngaahi Sisitemi Sola
 - Sola 'Api
 - Sola Maama Hala
 - Sola 'Aisi
 - Sola Pamu Vai
 - Sola Taki



Ngaahi tefito'i kongokonga 'o e Naunau Sola

- Paneli
- Konitulola
- Puha 'Uhila
- 'Iniveeta

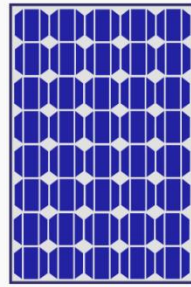
Paneli

From a solar cell
to a PV System

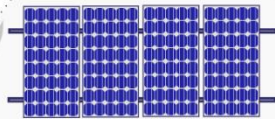


Solar Cell

Solar Module



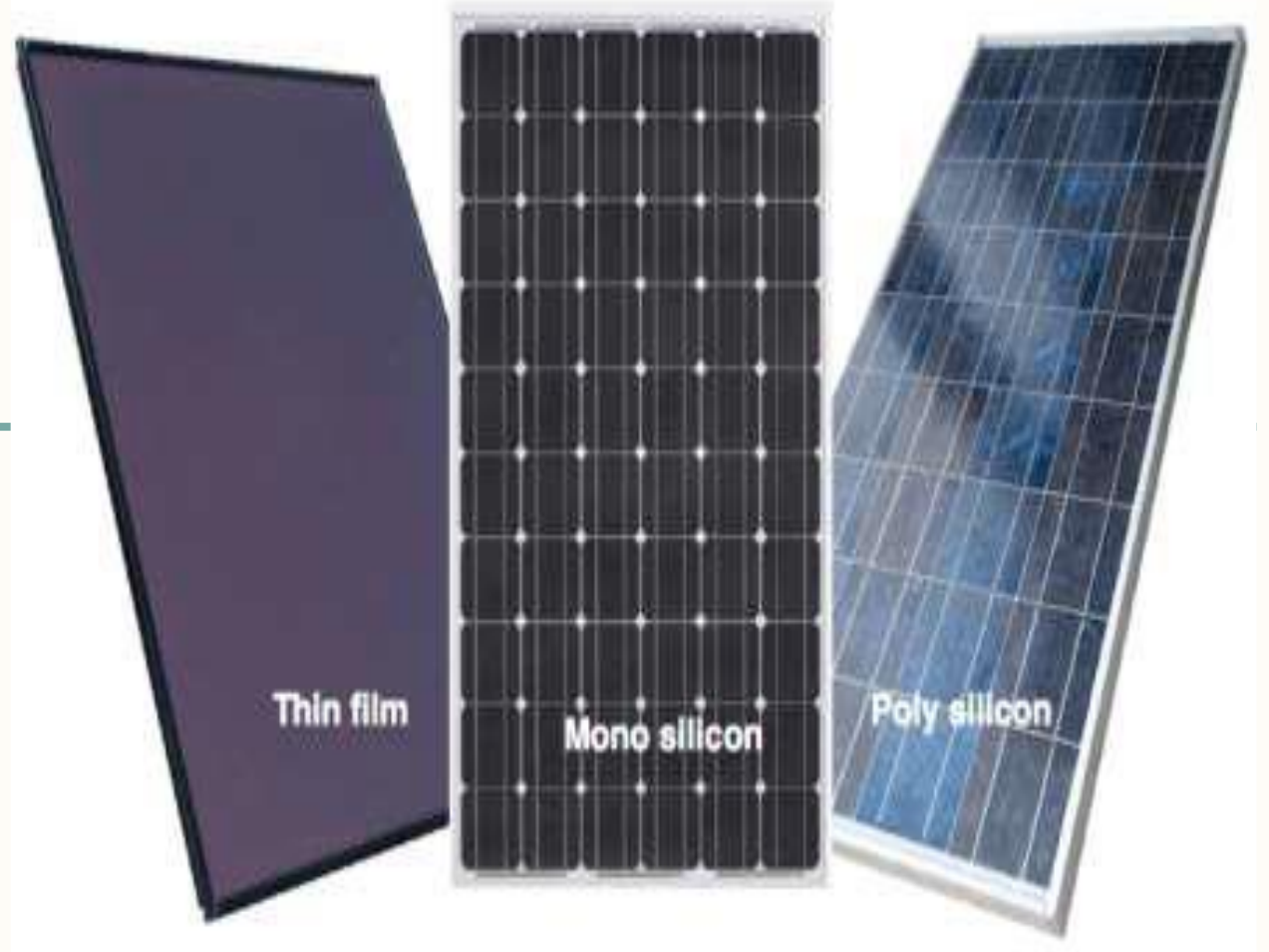
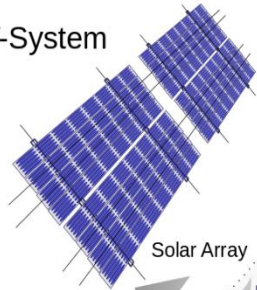
Solar Panel



Solar Array

- Electricity Meter
- AC Isolator
- Fusebox
- Inverter
- Battery
- Charge Controller
- Generation Meter
- DC Isolator
- Cabling
- Mounting
- Tracking System

PV-System



KONITULOLA

- Ta'ofi hono fakafonu e puha 'iha fo'l volota pau
- Tamate'l e louti 'oka tolalo e volota 'o e puha 'uhila



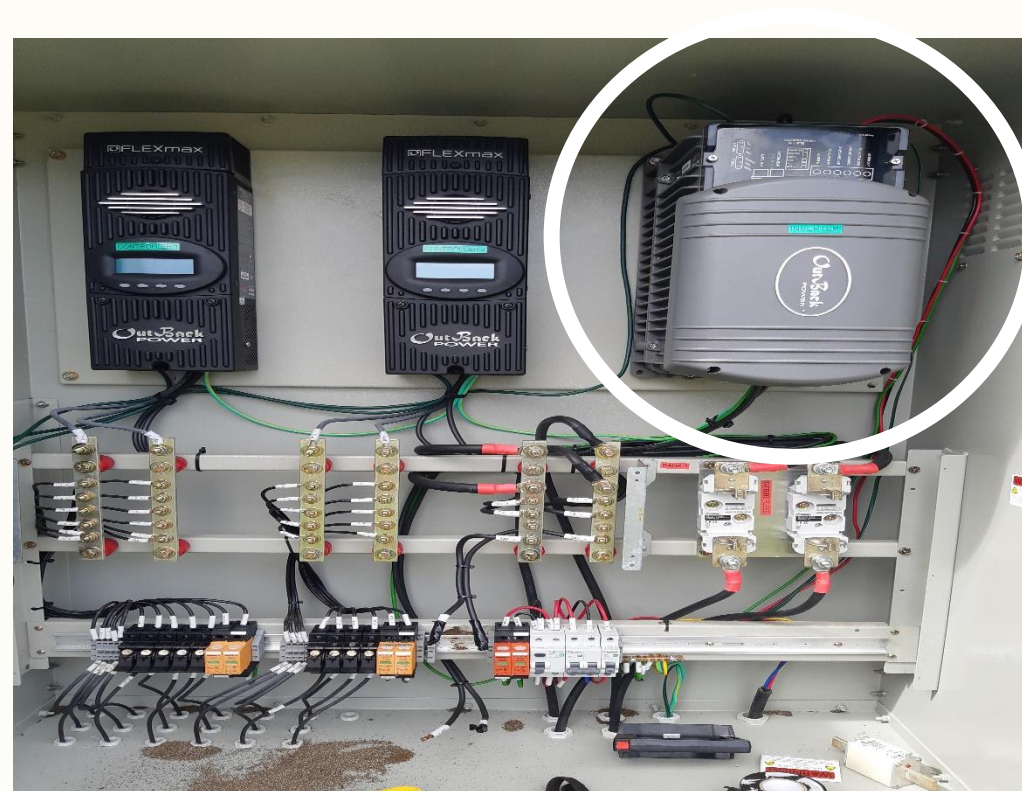
PUHA 'UHILA

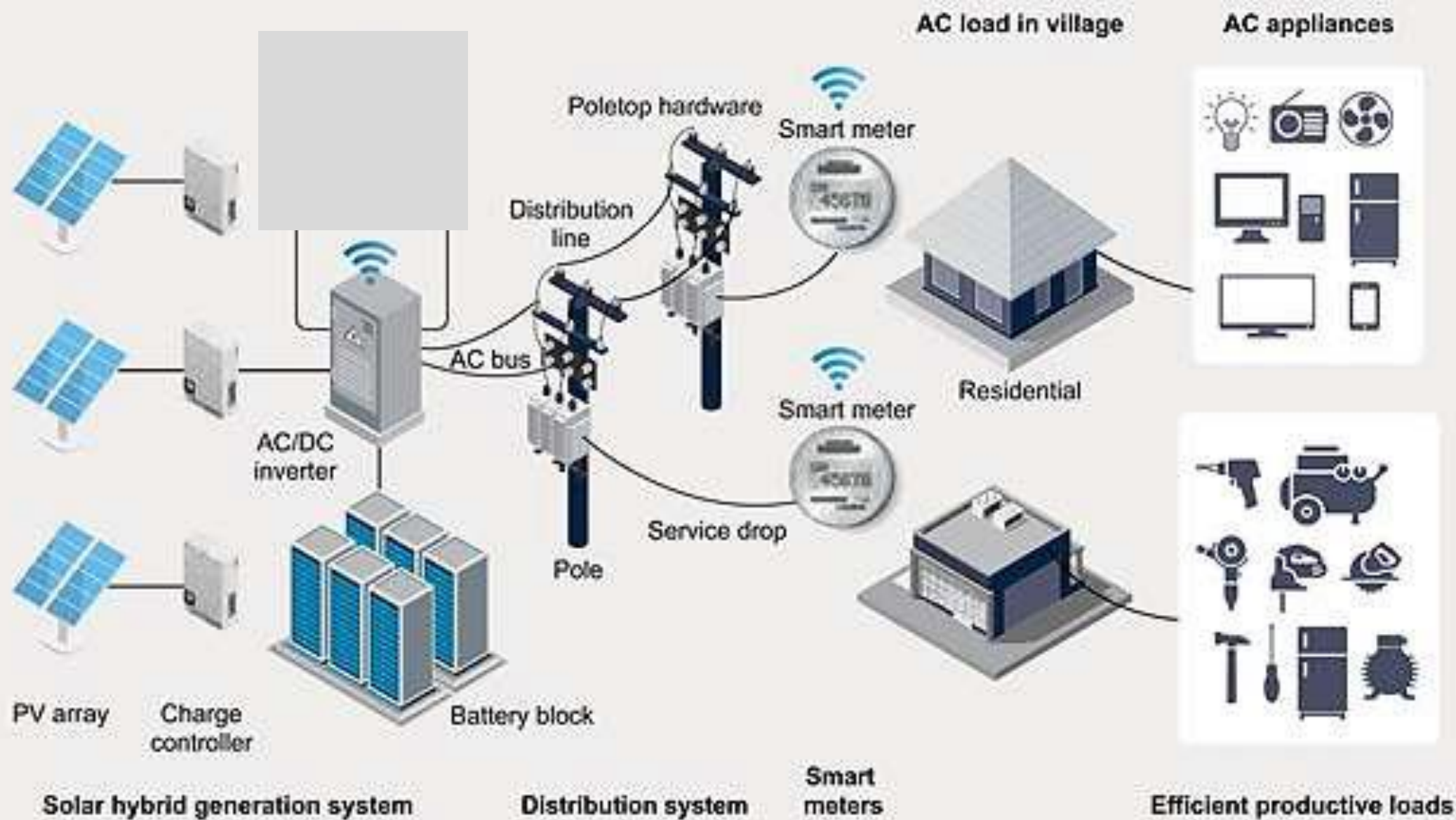
- Tanaki e ivi 'uhila 'oku ma'u 'ehe paneli meihe la'a lolotonga 'a e 'aho



‘INIVEETA

- Liliu e ivi ‘uhila DC kihe AC





Note: AC = alternating current; DC = direct current; PV = photovoltaic.