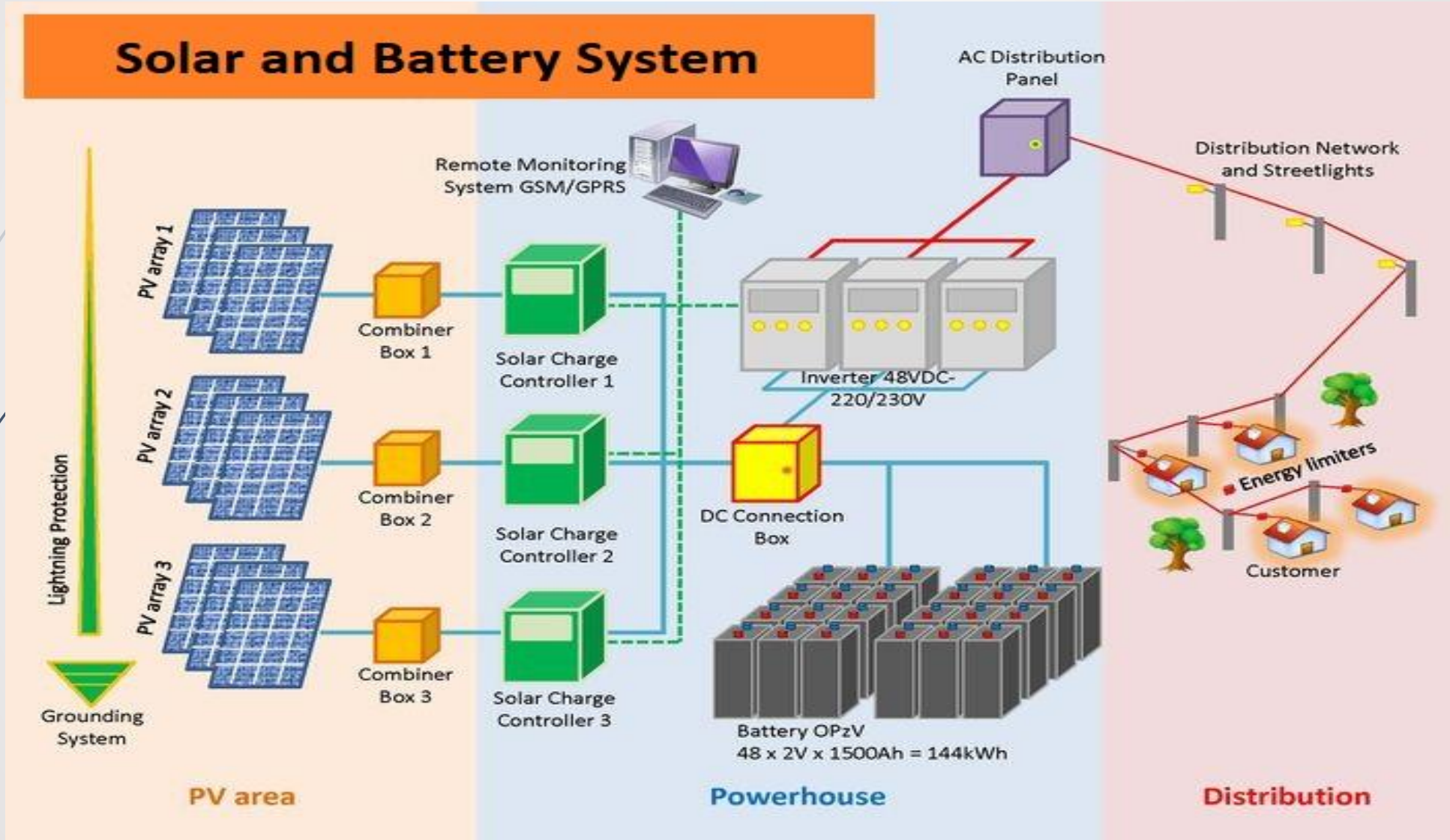




Electrical Safety Training

TREP-12 – Vava'u Mini-Grids Project

Understanding Your Electrical System

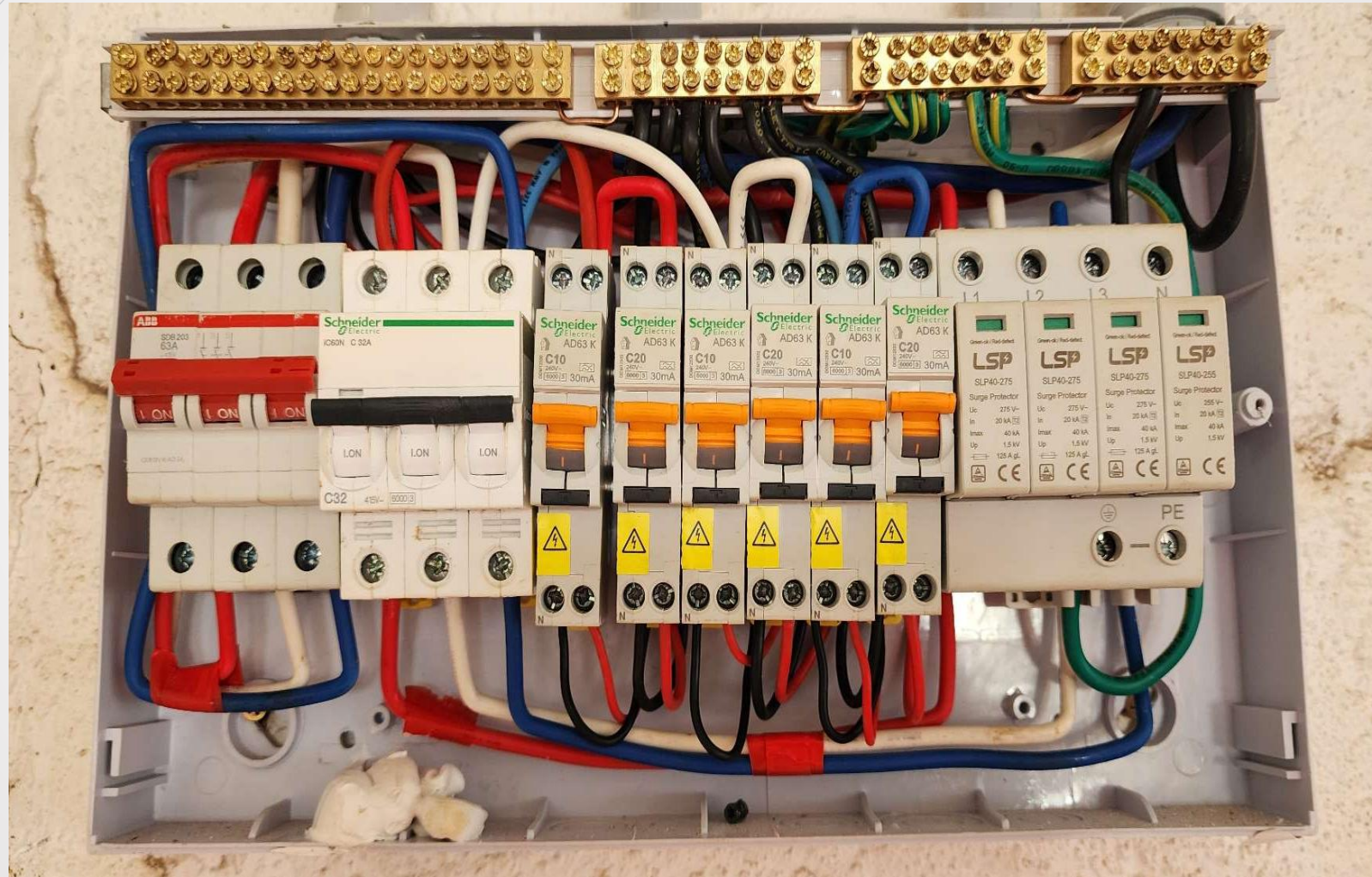




Key Parts in Your House

- **Main Switch:** Turns off power to your home in emergencies.
- **RCBOs** (Residual Current Breaker with Overload): Protects against electric shocks and overload.
- **SPDs** (Surge Protection Devices): Protects against power surges.
- **MCBs** (Miniature Circuit Breakers): Protects individual circuits.
- Lights and power points.

Key Parts in Your House





Electrical Safety Tips

- **Do's:**
 - **Keep Water Away:** Electricity and water are dangerous together.
 - **Report Problems:** Tell the technician if you see sparks, smoke, or damaged wires.
 - **Use Safe Plugs:** Always use proper plugs (three-pin plugs provide better safety).



Electrical Safety Tips

- **Don'ts:**
 - **Wet Hands:** Never touch outlets or switches with wet hands.
 - **Overload:** Don't plug too many devices into one outlet.
 - **Damaged Equipment:** Don't use broken cords, plugs, or appliances.
 - **Children:** Keep them away from outlets and electrical devices.
 - **Water:** Don't use water to put away electrical sparks or fire.
 - **Electrical Fault:** Don't attempt to repair or fix any issue in the sub-board, switches and outlets. Report the issue to the technician



Electrical Safety Tips

- **Emergency Response:**
 - **Electrocution:** Turn off the main switch immediately. Do not touch the person directly.
 - **Call for Help:** Contact the technician or local emergency services.



Questions?



Practical Demonstration